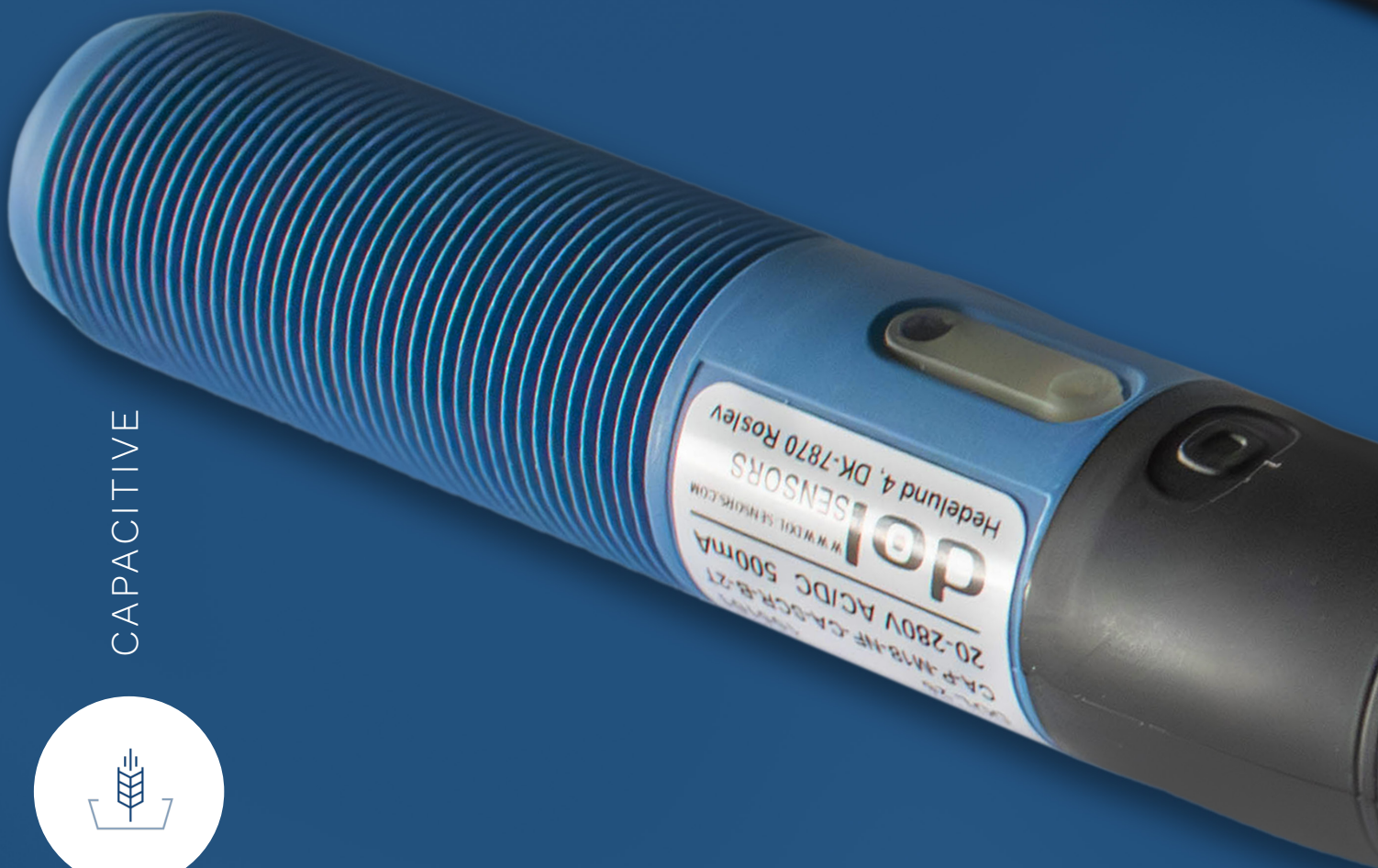


# DOL 26 Capacitive Sensor

Detect loose and solid materials. DOL 26 helps ensuring sufficient feed distribution in livestock houses.



CAPACITIVE



# DOL 26 Capacitive Sensor

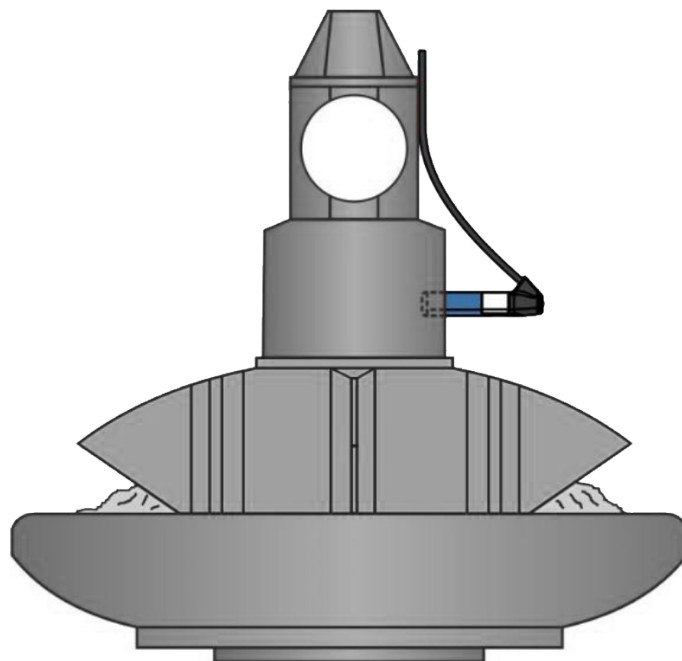
## Smooth design for limited space

Due to the mechanical design of DOL 26, the sensor is ideal for inclusion in small applications with limited space such as inside feed trough in poultry farms. In this way the sensor is kept away from the reach of the animal.

## Hardened design for agriculture

DOL 26 is specially designed for the harsh environment in livestock houses and withstands the high air humidity and the high dust level. The capacitive sensor is fully temperature compensated in complete wide temperature range.

DOL 26 is immune to EMI, short circuits, and any overload. No more burned off sensors due to installation mistakes!



DOL 26 comes with the cable return as well

### Different versions for different needs

DOL 26 capacitive sensor is available with both a straight and an angled cable exit as well as SCR, PNP, and NPN output options and smooth and threaded housings. The cable-return option is especially suited for feeding pans.

### Low power consumption

DOL 26 capacitive sensor has a very low power consumption in off state, which gives the possibility for sensors working in parallel on the same contactor.

### Easily trimmed

DOL 26 is easily trimmed with only the use of a screwdriver. The sensitivity of the sensor can be fixed or adjusted using a trimmer to suit different types of feed. The ON/OFF delay and MaxRunTimer of the sensor can be fixed or adjusted using a trimmer to suit different motor control units.

### Adjusted via the SmartAdjust App

The DOL 26 capacitive sensor is also available as an iDOL 26 sensor with NFC. The sensitivity of the iDOL 26 sensor can be adjusted using the SmartAdjust App to suit different needs.

[Click the Play icon below and watch the video about DOL 26](#)





dol-sensors A/S  
Agro Food Park 15  
8200 Aarhus N Denmark  
Tlf. +45 72 17 88 88  
Fax +45 72 17 59 59  
[www.dol-sensors.com](http://www.dol-sensors.com)